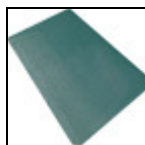




152 Rollins Avenue #102
Rockville, MD 20852
800-762-9010
240-780-3309 (fax)
<http://www.floormats.com>

Textured Design Kitchen Mats



Add style to your kitchen while enhancing comfort with our Textured Design Kitchen Mats. These floor mats boast a glossy, attractive pattern and come in 7 contemporary designer colors.

These kitchen floor mats come 1/2" and 7/8" thick and provide anti fatigue relief by compressing and molding to your feet to provide superior comfort while standing on your hard kitchen floor.

These comfort kitchen mats have a foam underside, which unlike gel mats, do not puncture, leak or lose their compressibility.

The sturdy vinyl surface of these kitchen mats is stain, puncture and mildew-resistant. A low-static surface design helps prevent food from sticking the floor mat's surface.

To clean these kitchen mats, simply sweep, vacuum or wipe down with a damp cloth.

Constructed of 25% recycled content.

Item No: FM.FAFKM

Standard Sizes (Approximate)

Size	Qty. 1	Qty. 2-10	Qty. 11-25	Qty. 26+
1/2" Thick - 2' x 3'	\$59.60	\$55.44	\$52.24	\$49.90
1/2" Thick - 2' x 4'	\$81.60	\$79.68	\$78.40	\$77.12
1/2" Thick - 3' x 4'	\$124.40	\$119.80	\$116.24	\$113.76
1/2" Thick - 3' x 5'	\$148.12	\$143.80	\$138.56	\$135.52
1/2" Thick - 4' x 6'	\$248.00	\$243.28	\$239.96	\$236.60
7/8" Thick - 2' x 3'	\$81.20	\$75.56	\$72.24	\$68.88
7/8" Thick - 2' x 4'	\$95.68	\$94.40	\$93.12	\$91.84
7/8" Thick - 3' x 4'	\$172.52	\$167.20	\$163.56	\$159.44
7/8" Thick - 3' x 5'	\$194.40	\$189.76	\$185.52	\$182.20
7/8" Thick - 4' x 6'	\$343.60	\$338.80	\$333.76	\$327.56

Custom Sizes - Per Sq. Ft. (Approximate)

Size	Qty. 1	Qty. 2-10	Qty. 11-25	Qty. 26+
3' Wide - 1/2" Thick	\$10.20	\$9.96	\$9.80	\$9.64
3' Wide - 7/8" Thick	\$11.96	\$11.80	\$11.64	\$11.48
4' Wide - 1/2" Thick	\$10.20	\$9.96	\$9.80	\$9.64
4' Wide - 7/8" Thick	\$11.96	\$11.80	\$11.64	\$11.48

Standard Colors



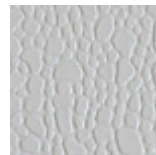
Midnight



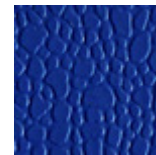
Mountain Trail



Sand



Grey Mist



River Blue



Desert Sunrise



Tropical Green